

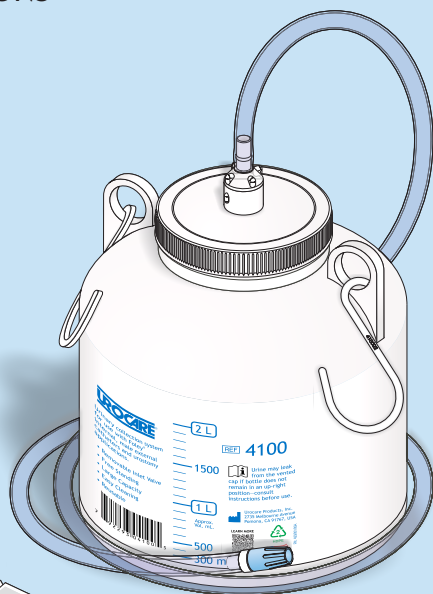


# URINARY DRAINAGE BOTTLE

## URINE COLLECTION SYSTEM

FOR USE WITH FOLEY INDWELLING CATHETERS, MALE  
EXTERNAL CATHETERS AND UROSTOMY APPLICATIONS

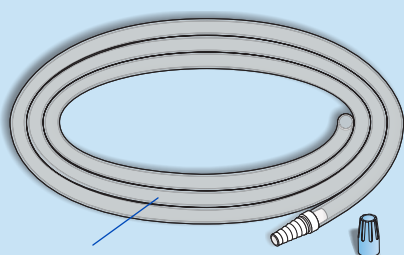
USE AND CARE INSTRUCTIONS  
FOR PRODUCT #4100



### KIT CONTENTS:



- 1 Durable Urinary Drainage Bottle (#410001)
- 1 Bottle Cap with Housing (#4101)
- 1 60" (1.5m) Drainage Tube with Adaptor & Cap (#6061)
- 1 Adjustable Tube Clamp (#6999)
- 1 Urinary Drainage Bottle Adaptor (#6003)
- 1 "HIGH-FLOW" Red Anti-Reflux Valve (#6001)
- 1 Large Gasket-Ring (#6000)
- 1 Pair of Hooks for Hanging (#4102)
- Illustrated Use and Care Instructions



\*6061 Clear-Vinyl Drainage Tube with Graduated Adaptor and Cap



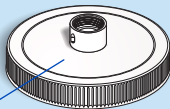
\*6999 Adjustable Thumb Clamp



\*6003 Urinary Drainage Bottle Adaptor



\*6001 High-Flow Anti-Reflux Valve



\*4101 Urinary Drainage Bottle Cap

\*410001 Drainage Bottle (not sold separately)



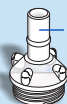
**FIGURE 1**  
BOTTLE ASSEMBLY



Urine may leak from the vented cap if bottle does not remain in an up-right position.

If red anti-reflux valve is missing or removed, leaks around the top valve housing at the center of the cap may occur. Use of the included Gasket-Ring (#6000) will be necessary to seal the housing threads to prevent leaks.

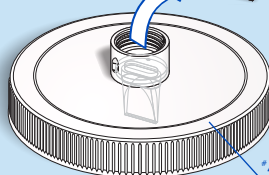
\*6000 Black Gasket-Ring replace for anti-reflux valve when not in use.



\*6003 Urinary Drainage Bottle Adaptor



\*6001 High-Flow Anti-Reflux Valve



\*4101 Urinary Drainage Bottle Cap

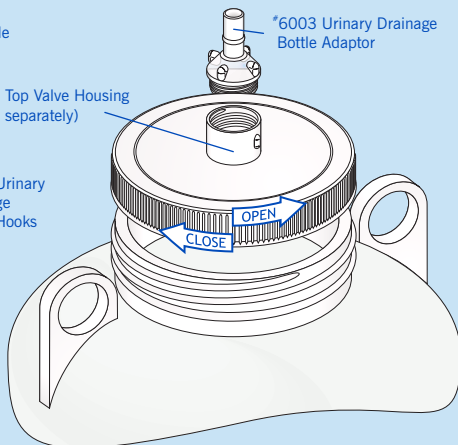
**FIGURE 2**  
TOP VALVE HOUSING DETAIL



\*6003 Urinary Drainage Bottle Adaptor

\*603005 Top Valve Housing (not sold separately)

\*4102 Urinary Drainage Bottle Hooks



**FIGURE 3**  
BOTTLE CAP CLOSE-UP

To remove adaptor (#6003) from bottle cap, remove tubing (#6061), hold housing (#603005) in place and turn adaptor counter-clockwise. To remove anti-reflux valve (#6001), remove cap from bottle and push valve through housing with finger from bottom up.

Check the valve for any visible signs of damage, distortion or stuck lips. Gently squeeze sides of valve until it opens; when released, the valve lips should close flat. To insure proper function, make certain that all parts are reassembled correctly before reuse—see figure 2.

## IMPORTANT! READ THIS FIRST:

To avoid possible drainage problems, read all instructions and precautions carefully before use. Bottle must always remain in an upright position during use; if it is pulled or tipped over, urine may leak from the vented bottle cap.

Since the red anti-reflux valve (#6001) serves two purposes; first, as an anti-reflux valve and second, as a gasket to prevent leaking, it is important that the valve remain in place during use. If use of the anti-reflux valve is not desired, Gasket-Ring (#6000) will be necessary to seal the threads of the top valve housing to prevent leaks.

## FOR USE WITH FOLEY CATHETERS:

**STEP 1:** Remove the cap from the cone-shaped adaptor on the clear-vinyl drainage tube (#6061)—see figure 1. Attach the outlet end of the Foley catheter to the cone-shaped adaptor on the drainage tube.

**STEP 2:** Secure the opposite end of the clear-vinyl drainage tube to the Urinary Drainage Bottle Adaptor (#6003).

**STEP 3:** Insert the anti-reflux valve (#6001) into the Top Valve Housing of the bottle cap (#4101)—see figure 2.

**STEP 4:** Connect the Urinary Drainage Bottle Adaptor (#6003) to the Top Valve Housing (#603005) of the bottle cap (#4101) and then the cap to the drain bottle (#410001)—see figure 3.

## FOR USE WITH MALE EXTERNAL CATHETERS:

**STEP 1:** Follow steps 1 through 4 above.

**STEP 2:** After the catheter, drainage tube, bottle cap and bottle are all connected, any air remaining in the catheter must be squeezed into the bottle. This will ensure that the one-way inlet (anti-reflux) valve is working properly and a siphon is more easily created when urine is passed. If desired, priming the system with plain tap water before use may assist in creating an immediate siphon condition.

## KEEPING YOUR URINARY DRAINAGE BOTTLE CLEAN:

The best time to clean a urinary appliance is immediately after use. Rinsing alone does not clean a urinary appliance and the use of vinegar, bleaches or toilet bowl cleaners only hardens, distorts and damages rubber, latex and plastic parts. Improper or inadequate cleaning can cause irreversible damage and discoloration of most urine collection systems... not to mention the unpleasant and embarrassing odors.

We recommend the use of Urolux<sup>®</sup> urinary and ostomy appliance cleanser & deodorant. When this concentrated solution is mixed with water, it cleans and deodorizes urinary and ostomy appliances. Crystal build-ups are dissolved and unpleasant odors are eliminated.

## Don't let this happen to your urinary appliance!



- *Effectively cleans the entire fluid path*
- *Concentrated formula goes a long way*
- *Dissolves uric crystal build-ups*

Urolux<sup>®</sup> is sold by the bottle in the following sizes:

**Item #700216** Standard size 16 fl. oz. (473 mL.) and

**Item #700204** Small/Trial size 4 fl. oz. (118 mL.)





## RELATED PRODUCTS

Urocare® Reusable Latex Leg Bags  
Uro-Safe® Disposable Vinyl Leg Bags  
Urocare® Urine Collection Bottles  
Urinary Drainage Systems & Kits  
Male Urinal Systems & Kits  
Uro-Con® & Uro-Cath® Male External Catheters  
Drain Valves & Adaptors  
Fabric Leg Bag Holders & Straps  
Catheter Straps  
Uro-Bond® Brush-on Silicone Adhesive  
Urofoam® Adhesive Foam Strips  
Urocare® Adhesive Remover Pads  
Tracho-Foam® Adhesive Foam Discs  
Uro-Prep® Protective Skin Barrier Wipes  
Urolux® Urinary Appliance Cleanser & Deodorant  
Connectors & Clamps  
Extension & Drainage Tubing  
DRI Excel™ & DRI Eclipse™ Bed-Wetting Treatment Alarms

For more information on this or any other Urocare product, please visit our website at [www.urocare.com](http://www.urocare.com). To place an order, please contact your health care provider.



Urocare Products, Inc.  
2735 Melbourne Avenue  
Pomona, CA 91767-1931  
U.S.A.



US and Canada: +1 (800) 423-4441  
Outside the US: +1 (909) 621-6013



[sales@urocare.com](mailto:sales@urocare.com)



LEARN MORE



FORM NO: PI4100EN-68521100G