

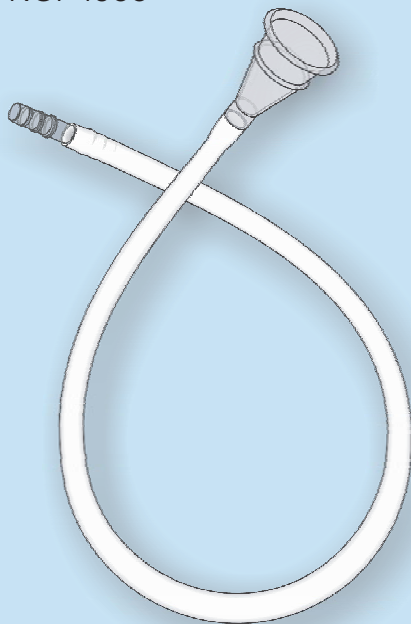


URO-CUP®

URINARY COLLECTION SYSTEM

FOR MANAGEMENT OF VESICO, ILEO AND
RETO-VAGINAL FISTULAE

USE AND CARE INSTRUCTIONS
FOR PRODUCT NO. 4300



The Uro-Cup® includes a funnel-shaped cup made from an inert silicone elastomer, 18" (45 cm) of pliable, white-rubber tubing, a plastic connector to attach the silicone cup section to the rubber tubing and a tubing connector which allows for connection to a bedside drainage system or urinary leg bag.

IMPORTANT! READ THIS FIRST:

To avoid possible drainage problems, read all instructions and precautions carefully before use.

PRIOR TO INSERTION:

1. Patient may be irrigated vaginally with tap water or a solution of doctor's choice to remove effluent already present in the vagina.
2. Uro-Cup® may be inserted by a physician, enterostomal therapist or R. N. If the patient is managing this condition at home, she may insert it herself after proper instruction has been given. A speculum may be used to aid in insertion, although it is not necessary.
3. Diagrams showing placement procedure are on the opposite page.

INSERTION:

1. To insert, depress the Uro-Cup® so that it is folded into fourths—see Figure 1. Hold Uro-Cup® firmly by pressing thumb and forefinger into top groove in the collapsed position. Lubricant is not necessary but may be used to facilitate insertion. The action will be that of inserting a diaphragm.
2. When inserted high enough into the vagina so that the Uro-Cup® is no longer visible, release the Uro-Cup® and it will resume its original shape. Give a gentle tug to the tubing so that it "seats" itself against the vaginal walls. This will prevent leakage.
3. Connect the opposite end of the tubing to a leg bag, bedside drainage bag or urinary drainage bottle. A sterile drainage unit is unnecessary.
4. When in position, the Uro-Cup® and tubing may be irrigated or flushed periodically to facilitate drainage. Tap water or other solution of doctor's choice may be used.

REMOVAL:

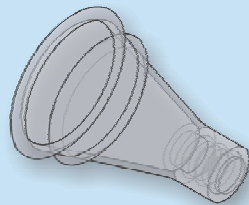
1. To remove, insert index finger into vagina to depress side of Uro-Cup® so that the "seal" is broken.
2. Grasp the end of the Uro-Cup®, pull out gently but firmly.
3. Clean immediately—refer to instructions below—and reinsert if necessary.

KEEPING THE URO-CUP® CLEAN:

The best time to clean a urinary appliance is immediately after use. Rinsing alone does not clean a urinary appliance and the use of vinegar, bleaches or toilet bowl cleaners only hardens, distorts and damages rubber, latex and plastic parts.

Improper or inadequate cleaning can cause irreversible damage and discoloration of most urine collection systems... not to mention the unpleasant and embarrassing odors.

The Uro-Cup® may be removed, disassembled and thoroughly cleaned with soap and water to remove any exudate deposit. Rinse thoroughly before reassembling.



Leak and Slip resistant
Tube Fitting

Uro-Cup® ready
for insertion

FIGURE 1

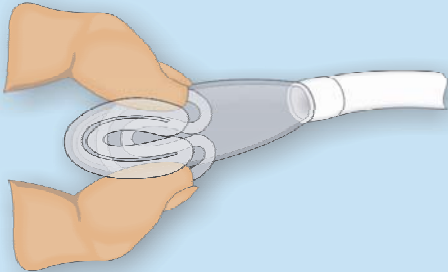


FIGURE 2

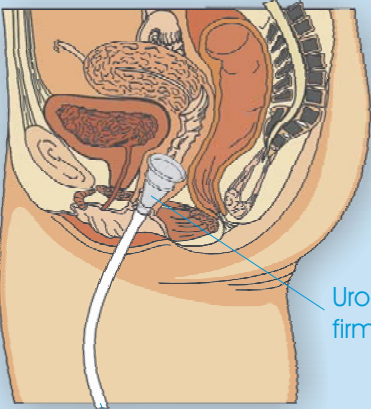
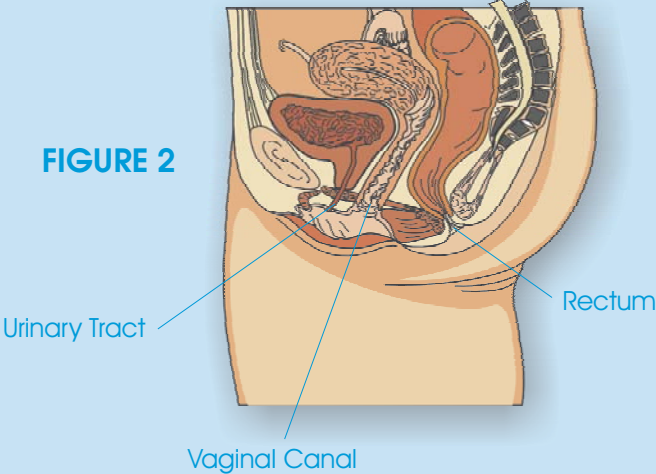


FIGURE 3

To Drainage System

Uro-Cup® seated
firmly in position



RELATED PRODUCTS

Urocare® Reusable Latex Leg Bags

Uro-Safe® Vinyl Leg Bags

Night Drainage Systems

Itch•ender!® Spray-on Lotion

Uro-Wash® Skin Cleanser

Uro-Con® & Uro-Cath® Male External Catheters

Drain Valves & Adaptors

Drainage Bottles

Uro-Prep® Protective Skin Wipes

Fabric Leg Bag Holders

Fabric Leg Straps

Uro-Bond® II Brush-on Silicone Adhesive

Urofoam® Adhesive Foam Strips

Adhesive Remover Pads

Urolux® Appliance Cleanser & Deodorant

Connectors & Clamps

Extension & Drainage Tubing

Dri-Sleeper™ Nocturnal Enuretic Alarm

For more information on any of Urocare's other products, contact your nearest Urocare dealer or write to:

Urocare Products, Inc.
Customer Service Department
2735 Melbourne Avenue
Pomona, CA 91767-1931, U.S.A.

Tel: (909) 621-6013 • Fax: (909) 621-4436

email: sales@urocare.com

Web: www.urocare.com



PLEASE RECYCLE
Printed on
Recycled Paper